

EXECUTIVE SUMMARY

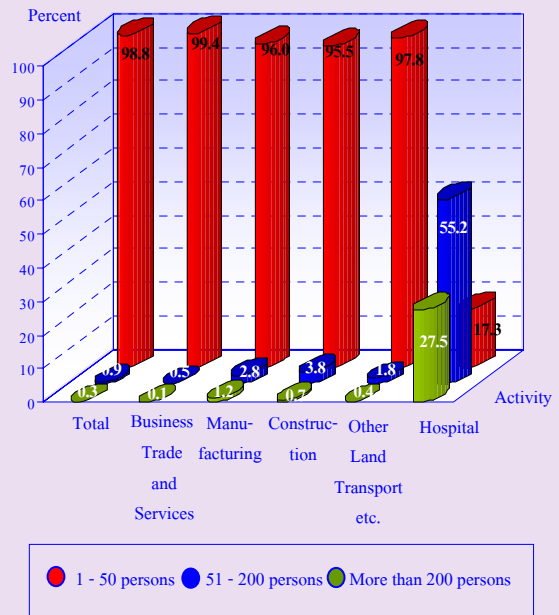
Due to attention is given to use the knowledge and technology as the country development base in order to enhance the country's competitiveness through knowledge - base learning. The National Statistical Office (NSO), as an authorized government agency, therefore, decides to conduct the first survey of Information and Communication Technology Survey in 2004. This is the 4th Survey.

The statistical data presents the results concerning information and communication technology during April 1, 2006 to March 31, 2007 of the establishments with at least one person engaged located **in municipal areas in the Whole Kingdom**. The coverage of the survey are business trade and services, manufacturing, construction, other land transport, (*excluding non-scheduled passenger land transport such as hire motorcycle etc.*), activities of travel agencies and hospital. The major findings are as follows;

Focusing on the total number of establishments in the coverage, there were 820,137 establishments. Most of them were engaged in *business trade and services activity*, which was about 686,059 establishments or 83.7 percent. Followed by those engaged in *manufacturing activity* was about 111,127 establishments or 13.5 percent. Those engaged in the *other land*

transport and activities of travel agencies, construction and hospital activities had proportions of about 1.6, 1.0 and 0.2 percent respectively.

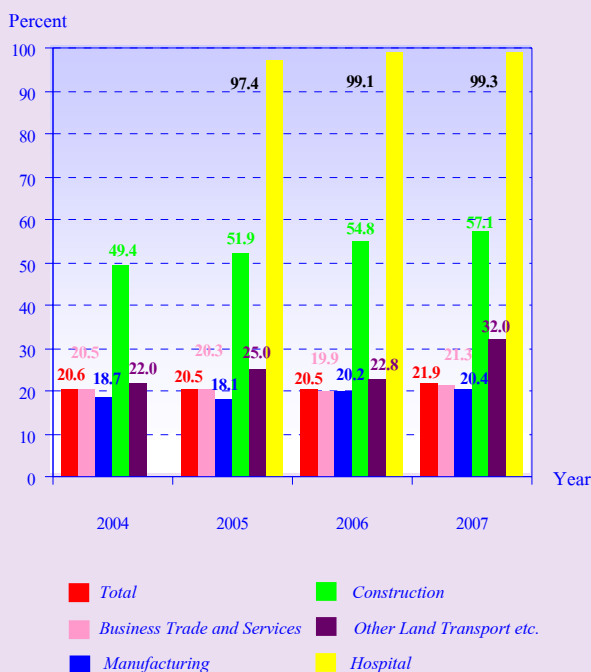
Figure A Percentage of Establishments in 2007 by Size of Establishment (Number of Persons Engaged) and Economic Activity



Considering by size of establishment, specified by the numbers of persons engaged, it was found that most of establishments (about 810,062 establishments or 98.8 percent) were small size, with 1 - 50 persons. Those with 51 - 200 persons and more than 200 persons were very small proportions of about 0.9 and 0.3 percent respectively. It is noticed that establishments with 1 - 50 persons in each activity had the highest proportion, except establishments engaged in *hospital activity* with more than 200 persons were higher proportion than the establishments with 1 - 50 persons.

1) **Computer Used**, the survey was found that 21.9 percent of establishments in municipal areas in the Whole Kingdom used the computers. It was 20.5 percent increased from 2006. It is noticed that the establishments engaged in *hospital activity* had the highest proportion about 99.3 percent of used computers.

Figure B Percentage of Establishments with Use of the Computer in 2004 – 2007 by Economic Activity

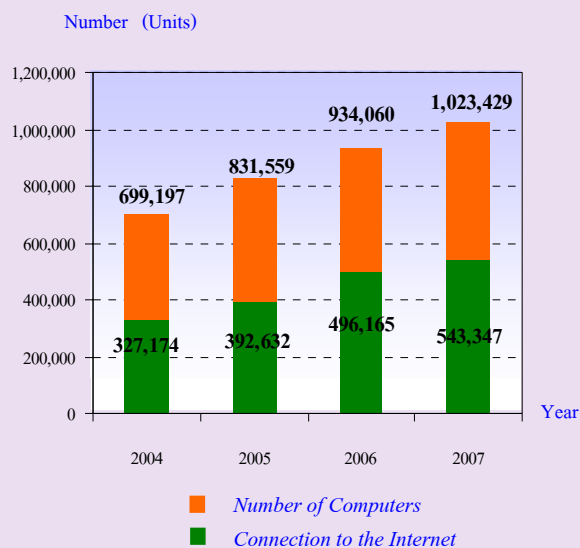


The unit of computers facilitated the business process, there were totally 1.0 million units or 5.7 units per establishment used of computer. The highest average number of computer was found in *hospital activity* about 79.1 units.

For the Connection to the Internet, in 2007, there was 543,347 units or about 53.1 percent of the total number of computer.

The number of persons using computers in their normal work routines (at least once a week), there were 1.1 million persons.

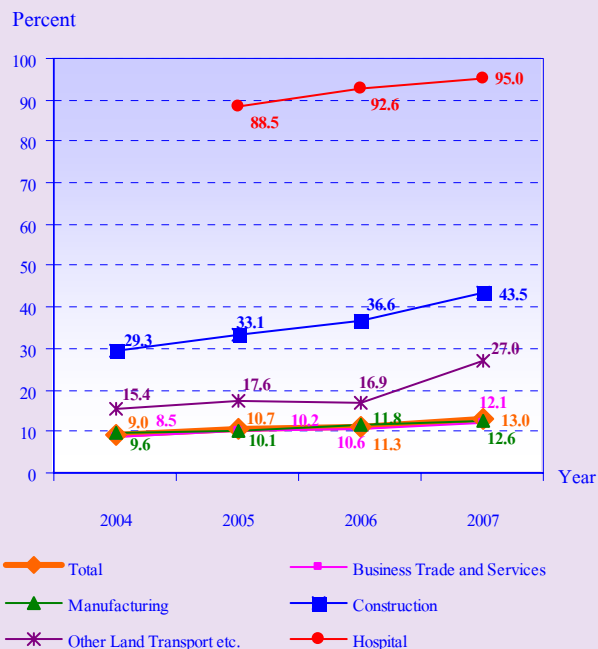
Figure C Number of Computers and Connection to the Internet in 2004 – 2007



2) **Internet used**, figure D show that 13.0 percent of establishments used of internet, which is increased from 2006. The highest proportion of using internet, about 95.0 percent, engaged in *hospital activity*. The followings engaged in *construction* and *other land transport and activities of travel agencies activities* which were about 43.5 and 27.0 percent respectively.

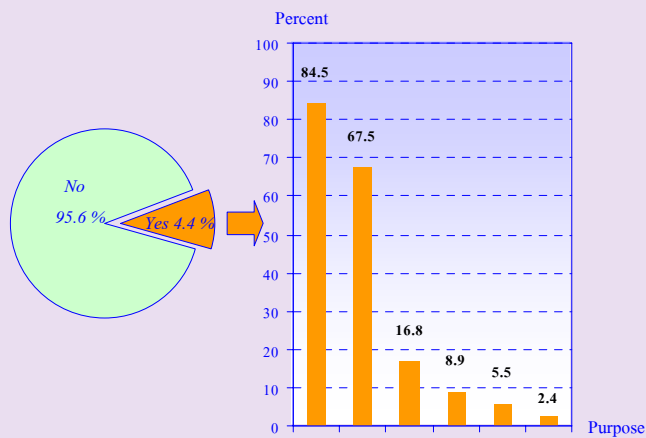
The major purpose of internet activities, about 90.0 percent, accessed to the internet for information searching, about 59.0 and 48.8 percent of establishments had accessed to the electronic mail and internet for monitoring the market respectively.

Figure D Percentage of Establishments with Using Internet in 2004 - 2007 by Economic Activity



3) Website used, there was about 4.4 percent. The purposes of using of web site were marketing the establishment products of about 84.5 percent. The following was inquiry or contact facility by 67.5 percent.

Figure E Percentage of Establishments with Use of Web Site in 2007 by Purpose



Purpose:

1 = Marketing the Establishment Product

2 = Inquiry/Contact Facility

3 = Receiving Purchased Order

4 = Providing after Sales Services

5 = Information Networking

6 = Online Payment

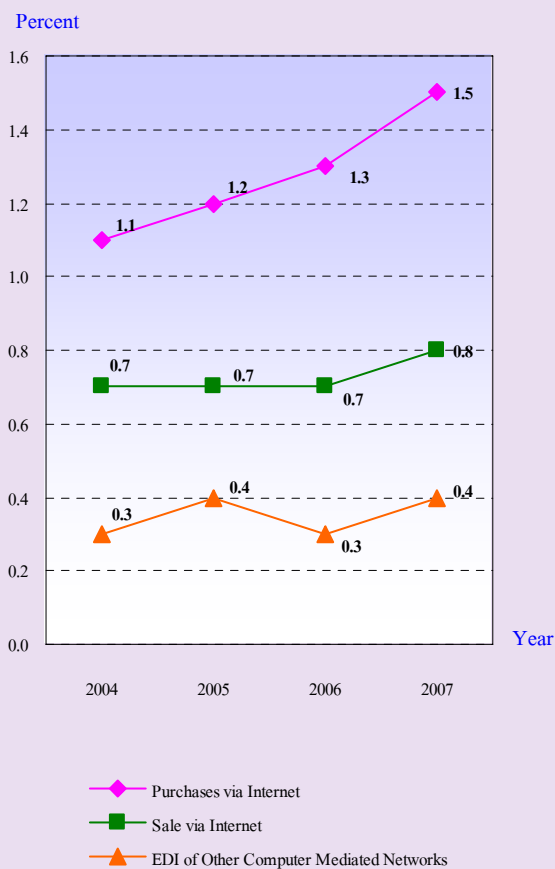
Note : More than one characteristic can be done by an establishment.

Note : Exclude hospital activity in 2004.

The receiving purchased order and providing after sale services were about 16.8 and 8.9 percent.

4) Purchase via internet, there was very small proportion of about 1.5 percent. For the sales via internet was about 0.8 percent and use of EDI or other computer mediated networks (Other than internet), was about 0.4 percent.

Figure F Percentage of Establishments with Purchase, Sale via Internet and Use of EDI in 2004 - 2007



5) Spending on Information and Communication Technology Goods and Services of establishments in the Whole Kingdom in 2007, there were totally 16,900.9 million baht or about 20,607.4 baht per establishment. Most of them was for *communication spending* of about 9,366.9 million baht. The following was spent on *computer hardware* of about 3,742.2 million baht, while *communication equipment spending* was the lowest of about 887.3 million baht.

In term of size of establishment, it was found that the spending on goods and services of the small scale establishments

(1 - 50 persons) was totally 10,557.3 million baht or 13,032.7 baht per establishment. The establishments with 51 - 200 persons had totally 2,709.3 million baht or about 355,224.9 baht per establishment. While the large scale establishments (more than 200 persons) had totally 3,634.4 million baht or 1.5 million baht per establishment. It is noted that the establishments with 1 - 200 persons had the highest communication spending, whereas the establishments with more than 200 persons had the highest computer hardware spending.

Table A Spending on Information and Communication Technology Goods and Services of Establishments in 2007 by Size of Establishment and Economic Activity

Size of Establishment/ Economic Activity	Number of Establish- ments (Unit)	Spending on Information and Communication Technology Goods and Services (Million Baht)						
		Total	Com- puter Hard ware Spen- ding	Com- puter Soft ware Spen- ding	Com- puter Ser- vices Spen- ding	Com- muni- cation Spen- ding	Com- muni- cation Equip- ment Spen- ding	Average Per Establish- ment (Baht)
Total	820,137	16,900.9 (100.0)	3,742.2 (22.1)	1,889.2 (11.2)	1,015.3 (6.0)	9,366.9 (55.4)	887.3 (5.3)	20,607.4
Size of Establishment								
1 - 50 persons	810,062	10,557.3	1,321.2	496.0	428.6	7,731.1	580.5	13,032.7
51 - 200 persons	7,627	2,709.3	831.7	564.7	207.5	970.4	135.0	355,224.9
More than 200 persons	2,448	3,634.4	1,589.4	828.6	379.2	665.4	171.8	1,484,640.5
Economic Activity								
Business Trade and Services	686,059	10,550.4	1,658.3	778.9	459.3	7,039.7	614.2	15,378.3
Manufacturing	111,127	4,134.8	1,248.2	668.6	403.5	1,620.5	194.0	37,207.9
Construction	8,585	752.4	130.7	213.9	71.2	321.9	14.6	87,641.2
Other Land Transport etc.	13,035	391.7	68.2	34.1	18.9	250.0	20.5	30,049.9
Hospital	1,331	1,071.7	636.7	193.6	62.4	134.9	44.1	805,184.1

Considering by economic activity, it was found that the establishments engaged in *business trade and services activity* had spent totally 10,550.4 million baht or 15,378.3 baht per establishment. Those engaged in *manufacturing activity* had totally 4,134.8 million baht or 37,207.9 baht per establishment. The *construction and other land transportation and activities of travel agencies activities* had 752.4 and 391.7 million baht or 87,641.2 and 30,049.9 baht per establishment respectively. Those engaged in *hospital activity* had totally 1,071.7 million baht or 805,184.1 baht per establishment. It is noticeable that the establishments engaged in *business trade and services activity* had spent on information and communication technology goods and services higher than the other economic activity.

6) Information Technology Subject Graduated Personnel; (Table B) the result of survey shows that in 2007, the totally 104,587 establishments in form of company limited or public company limited in the Whole Kingdom, there were 43,988 employees graduated in information technology subject. Most of them (about 21,736 persons or 49.4 percent) worked in the establishments with 1 - 50 persons.

Considering by activity, it was found that the *business trade and services activity* had the information technology personnel about 29,122 persons. The *manufacturing activity* had about 11,779 persons. While the establishments engaged in *hospital activity* had the lowest number of about 706 persons.

Information Technology Personnel, there were totally 98,941 persons. Out of these graduated in information technology subject about 32,548 persons or about 32.9 percent. The rest, about 66,393 persons, did not. It is illustrated that most of information technology personnel was not information technology subject graduated.

In term of size of establishment, it was found that the establishments with 1 - 50 persons had the highest number information technology personnel of about 57,837 persons. While the large scale establishments with more than 200 persons had the lowest number of about 19,133 persons.

Considering by activity, it was found that establishments engaged in *business trade and services activity* had the highest number of about 65,053 persons. The following was *manufacturing activity* of about 26,246 persons. The establishments engaged in *other activities*, in each, had the number less than 3,000 persons.

Table B Information Technology Personnel and Personnel Graduated in Information Technology Subject of Establishments in 2007 by Size of Establishment and Economic Activity

Unit : Persons

Size of Establishment/ Economic Activity	Information Technology Personnel			Personnel Graduate in Information Technology Subject
	Total	Information Technology Subject	Other Subject	
Total	98,941	32,548	66,393	43,988
	(100.0)	(32.9)	(67.1)	
Size of Establishment				
1 - 50 persons	57,837	15,213	42,624	21,736
51 - 200 persons	21,972	9,834	12,138	12,036
More than 200 persons	19,133	7,502	11,631	10,217
Economic Activity				
Business Trade and Services	65,053	22,064	42,989	29,122
Manufacturing	26,246	8,040	18,206	11,779
Construction	2,579	1,040	1,540	1,323
Other Land Transport etc.	2,560	504	2,056	706
Hospital	2,502	901	1,601	1,059

Note : Establishments in formed as company limited or public company limited only.