

Summary of the labor force survey in Thailand : December 2015

of population Table 1 Comparison aged 15 years and over by labor force status

Unit : million persons

Labor force status	2014		2015		
	Nov	Dec	Jan	Nov	Dec
Persons 15 years and over	54.99	55.02	55.06	55.38	55.41
1. Total labor force	38.47	38.96	38.01	38.56	39.16
1.1 employed	38.16	38.66	37.36	38.11	38.87
1.2 unemployed	0.21	0.22	0.40	0.35	0.25
1.3 seasonally	0.10	0.08	0.25	0.10	0.04
2. Not in labor force	16.52	16.06	17.05	16.82	16.25

employed persons Table 2 Comparison of number of by industry

Unit : Million persons

Industry	2014		2015		
	Nov	Dec	Jan	Nov	Dec
Total	38.16	38.66	37.36	38.11	38.87
1. Agricultural	13.15	13.46	11.23	12.85	13.63
- Agriculture, forestry and fishing	13.15	13.46	11.23	12.85	13.63
2. Non-Agricultural	25.01	25.20	26.13	25.26	25.24
- Manufacturing	6.35	6.62	6.65	6.34	6.31
- Construction	2.08	2.18	2.28	2.02	2.04
- Wholesale and retail trade; repair of motor vehicles and motorcycles	6.02	5.96	6.29	6.04	6.03
- Transportation and storage	1.27	1.11	1.21	1.27	1.20
- Accommodation and food service activities	2.60	2.60	2.64	2.70	2.69
- Financial and insurance activities	0.64	0.44	0.53	0.58	0.51
- Real estate activities	0.16	0.15	0.21	0.21	0.18
- Public administration defence and compulsory social security	1.59	1.53	1.63	1.58	1.60
- Education	1.11	1.24	1.17	1.21	1.17
- Human health and social work activities	0.78	0.68	0.67	0.72	0.76
- Other service activities	0.68	0.75	0.72	0.76	0.76
- Others	1.73	1.94	2.13	1.83	1.99

Structure of the Labor force

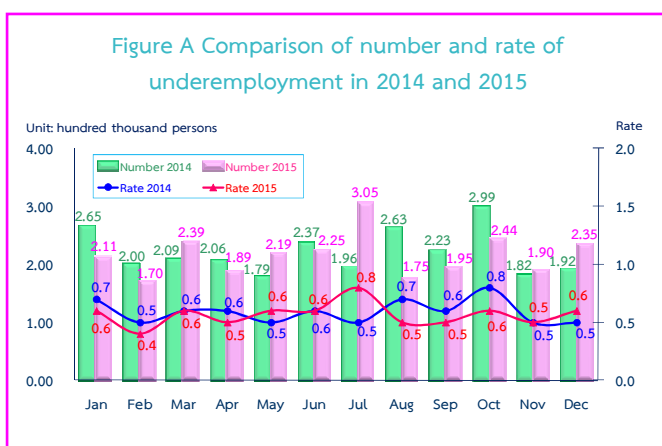
The results of Labor Force Survey in December 2015 showed that there are population, aged 15 years and over, of about 55.41 million persons. Of these 39.16 million were in the labor force or available for work (38.87 million were employed, 0.25 million were unemployed and 40 thousand were seasonally inactive labor force), while 16.25 million were not in the labor force or not available for work, such as housewives, students or elderly.

Employed of the Labor force

-Employed

There were 38.87 million employed persons, which 13.63 and 25.24 million were in agriculture and non-agriculture sectors, respectively. Comparing with December in 2014, it was shown that the number of employed persons in agriculture sector increased by 0.17 million, but non-agriculture sector increased by 40 thousand (from 25.20 million to 25.24 million). This increment was found in various industries e.g. 90 thousand in transportation and storage and accommodation and food service activities, 80 thousand in human health and social work activities, 70 thousand in wholesale and retail trade repair of motor vehicles and motorcycles, in financial and insurance activities and public administration defence and compulsory social security and 30 thousand in real estate activities, However, a decrease in some other industries was found e.g., 0.31 million in manufacturing, 0.14 million in construction and 70 thousand in education and the rest shared in the other industries.

Figure A Comparison of number and rate of underemployment in 2014 and 2015

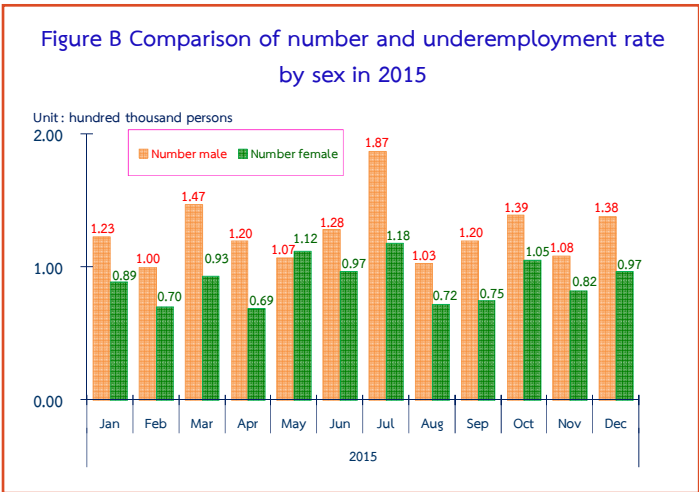


Remark : Underemployment worker is a worker who working less than 35 hours per week and available for additional work.

Underemployment workers

Considering the number of underemployed workers and available for additional work, there were 0.23 million or 0.6% of the total employed persons.

Figure B Comparison of number and underemployment rate by sex in 2015

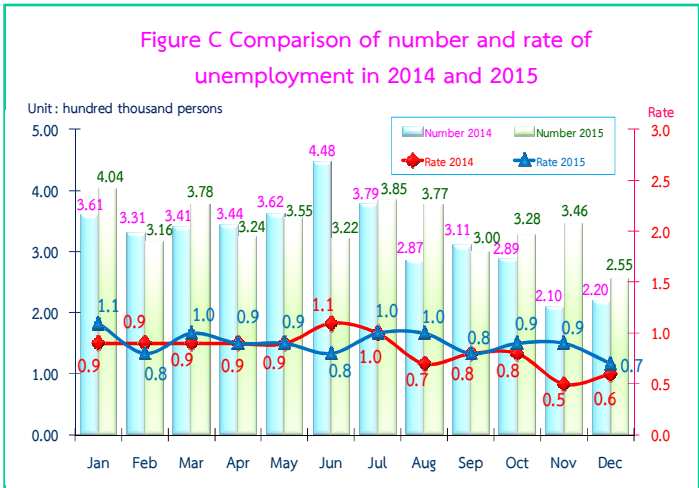


Considered underemployment rate by sex, it was shown that the overall underemployment rate of male was higher than female.

In December 2015, number of underemployment of male was higher than female (0.14 million and 97 thousand respectively).

And underemployment rate of male was 0.7% and female was 0.5%.

Figure C Comparison of number and rate of unemployment in 2014 and 2015



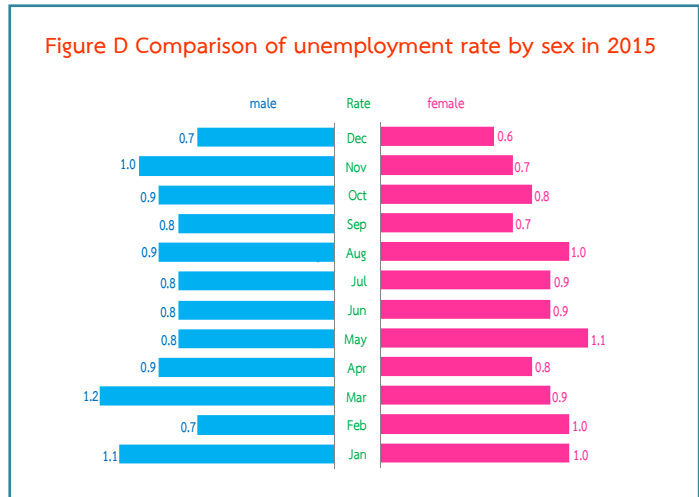
Unemployment

-Number and Rate of unemployment

In December 2015, the total number of unemployed persons were 0.25 million or 0.7% of the total labor force and increased of 35 thousand (from 220 thousand to 255 thousand) comparing to the same period as in 2014. And, showed a decreased of 91 thousand (from 346 thousand to 255 thousand) in November 2015.

Comparing to the unemployment rate to the same period as in 2014 increased from 0.6% to 0.7%

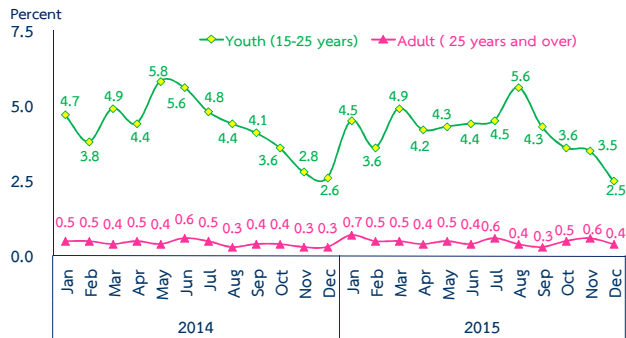
Figure D Comparison of unemployment rate by sex in 2015



Unemployment rate by sex

Comparing to the unemployment rate by sex in December 2015, it was found that, unemployment rate of male was higher than female (0.7% and 0.6% respectively).

Figure E Comparing of unemployment rate by age group in 2014 and 2015

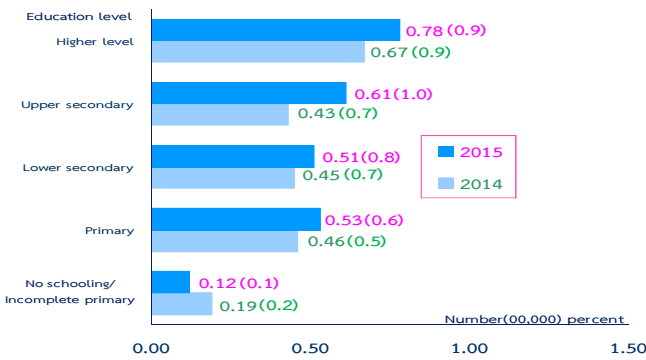


Unemployment rate by age group

Regarding the unemployment rates by age groups, there were 2.5% in a youth group (aged 15-24 years) and 0.4% in adults group (age 25 years and over).

The unemployment rate in the youth group decreased from 2.6% to 2.5% comparing to the same period as in 2014, and decreased from 3.5% to 2.5% comparing to November in 2015. In adults group decreased from 0.6% to 0.4% comparing to the same period as in 2014.

Figure F Comparing of number and rate of unemployment by level educational attainment in December 2014 and 2015

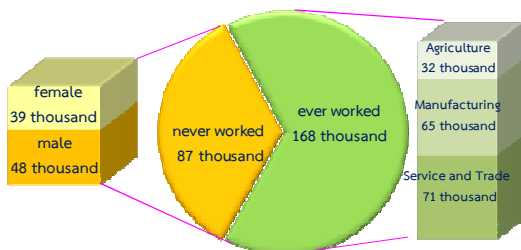


Number and Rate of unemployment by level educational attainment

For level of educational attainment of unemployed persons in December 2015, it was found that most of them had higher level (78 thousand or 0.9%), followed by those with upper secondary level (61 thousand or 1.0%), primary level (53 thousand or 0.6%), lower secondary level (51 thousand or 0.8%) and no schooling and incomplete primary level (12 thousand or 0.1%).

Comparing to the same period in 2014, the result showed that the number of unemployed persons with upper secondary level increased of 18 thousand, higher level of 11 thousand, primary level of 7 thousand, and lower secondary level of 6 thousand. However, those with no schooling and incomplete primary level of 7 thousand

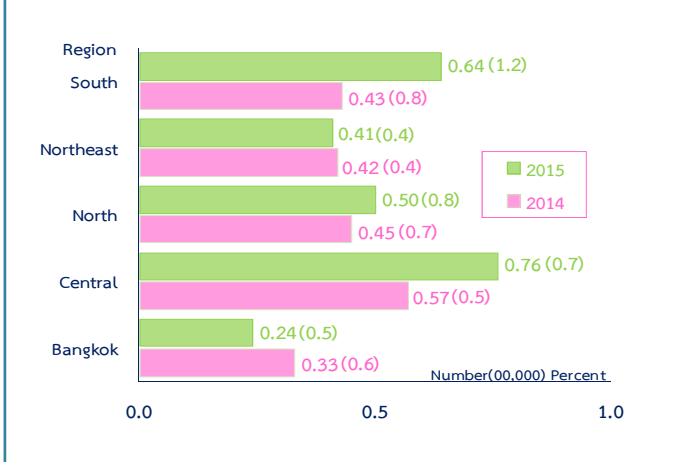
Figure G Number of unemployed by experience of work in December 2015



Number of unemployed by experience of work

Out of 255 thousand, there were 87 thousand having never worked (48 thousand were male and 39 thousand were female) and 168 thousand had ever, among these, the number of unemployed persons who ever worked increased by 35 thousand (from 133 thousand to 168 thousand), comparing to the same period as in 2014. It was found that 168 thousand distributed in 3 sectors i.e. 65 thousand in manufacturing, 71 thousand in services and trade and 32 thousand in agriculture.

Figure H Comparing of number of unemployed and unemployment rate by region in December 2014 and 2015



Number of unemployed and unemployment rate by region

Concerning the number of unemployed and the unemployment rate by region, it was found that those in the Central was the highest with (76 thousand or 0.7%), followed by the South (64 thousand or 1.2%), the North (50 thousand or 0.8%), the Northeast (41 thousand or 0.4%) and Bangkok (24 thousand or 0.5%).

Comparing to the same period as in 2014, the unemployment of the whole kingdom increased of 35 thousand. However, concerning by region, it increases in the South, the Central, the North, But decrease in Bangkok and the Northeast.