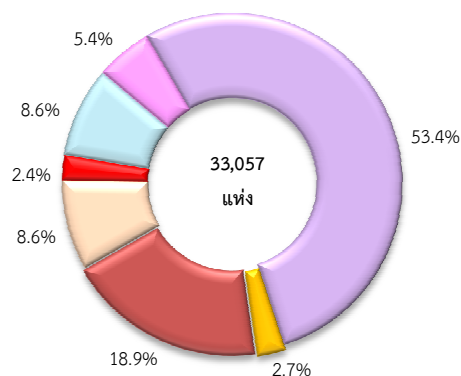


The National Statistical Office (NSO) carried out the 2014 Construction Industry Survey, which is the 4th survey and the NSO planned for conducting this survey every 5 years. The main objective of the survey is to collect basic information data on construction establishments. Data is vital to economic development planning of the country and to private employment planning as well, the survey covered all construction establishments in the Whole Kingdom, which engaged in construction of buildings, civil engineering and specialized construction activities (Section F of The Thailand Standard Industrial Classifications: TSIC 2009). The field work was conducted during June 1 to September 30, 2014. The samples were from 12,971 establishments from totally 33,057 establishments. The data presented in this report was the operation of the construction establishments located **in the Whole Kingdom** during January 1 to December 31, 2013. The major findings are as follows:

1. Number of establishment

The results of the 2014 Construction Industry Survey of 33,057 establishments in the Whole Kingdom, it was found that most of them (53.4 percent) were engaged in *construction of buildings*. Followed by those engaged in *construction of roads and railways* was 18.9 percent. The other class of construction industry not mentioned above had rather low proportion each had less than 9.0 percent of the total.

Figure 1 Percentage of construction establishments in the Whole Kingdom by class of construction industry



- Class 4100 Construction of buildings
- Class 4210 Construction of roads and railways
- Class 4312 Site preparation
- Class 4321 Electrical installation
- Class 4322 Plumbing, heat and air-conditioning installation
- Class 4330 Building completion and finishing
- Others class i.e. class 4220 Construction of utility projects, class 4290 Construction of other civil engineering projects, class 4311 Demolition, Class 4329 Other construction installation and class 4390 Other specialized construction activities

2. Size of establishment

Most of them were 66.5 percent with 1 - 5 persons engaged. The establishment with 6 - 10 persons engaged was 19.6 percent. For the establishment with more than 10 persons engaged was 13.9 percent.

Considering by class of construction industry, it was found that most the establishment (more than 45.0 percent) was with 1 - 5 persons engaged. Except for those engaged in *construction of roads and railways*, *construction of other civil engineering* and *other specialized construction activities*.

Table 1 Percentage of construction establishments in the Whole Kingdom by size of establishments and class of construction industry

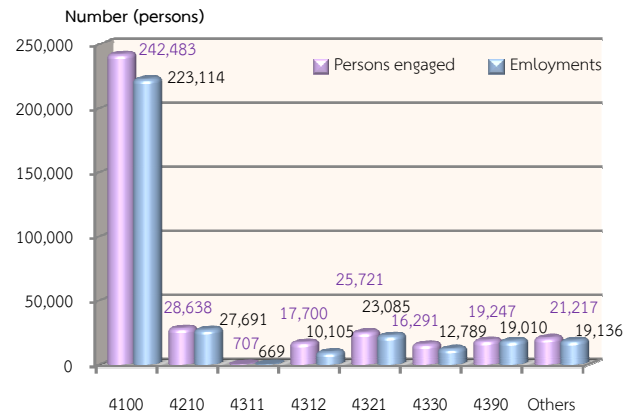
(unit : persons)

Size of establishments/ Class of construction industry	รวม	1 – 5	6 – 10	11 – 15	16 – 20	> 20
Total	100.0	66.5	19.6	5.9	2.1	5.9
4100 Construction of buildings	100.0	57.3	27.5	7.3	2.2	5.7
4210 Construction of roads and railways	100.0	17.8	24.0	18.2	8.8	31.2
4220 Construction of utility projects	100.0	68.8	13.8	4.7	2.4	10.3
4290 Construction of other civil engineering	100.0	38.4	21.9	11.0	8.2	20.5
4311 Demolition	100.0	48.9	17.8	13.3	4.4	15.6
4312 Site preparation	100.0	92.7	5.2	1.1	0.4	0.6
4321 Electrical installation	100.0	70.3	13.3	5.4	3.1	7.9
4322 Plumbing, heat and air-conditioning installation	100.0	63.7	16.6	5.2	4.2	10.3
4329 Other construction installation	100.0	83.3	6.0	3.5	2.1	5.1
4330 Building completion and finishing	100.0	80.2	12.2	3.6	1.1	2.9
4390 Other specialized construction activities	100.0	36.2	21.2	10.6	5.5	26.5

3. Number of persons engaged and employees

In 2013, the workers of the construction establishments in the Whole Kingdom totally to 372,003 persons. In term of employments, the number of employees totally to 335,598 persons. Considering by class of construction industry, it was found that most of them worked in *construction of buildings*, of 223,114 persons or 66.5 percent. Followed by those worked in *construction of roads and railways* 27,691 persons or 8.3 percent. The rest engaged in class of construction industry not mentioned above.

Figure 2 Number of persons engaged construction establishments in the Whole Kingdom by class of construction industry



Note: Persons engaged refer to owners or juristic partnerships, unpaid workers and employees

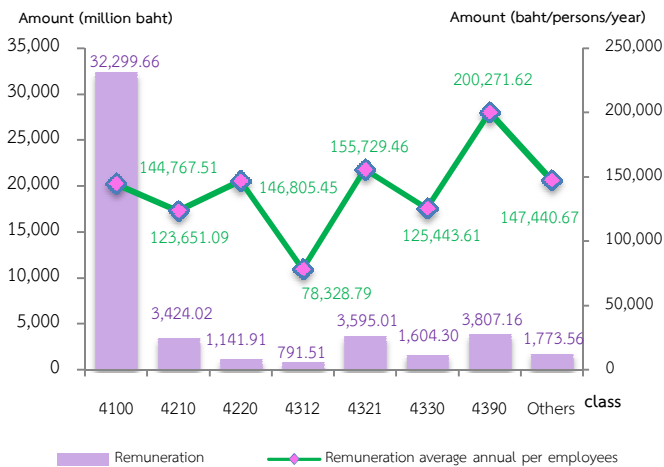
Class of construction industry:

- Class 4100 Construction of buildings
- Class 4210 Construction of roads and railways
- Class 4311 Demolition
- Class 4312 Site preparation
- Class 4321 Electrical installation
- Class 4330 Building completion and finishing
- Class 4390 Other specialized construction activities
- Other class i.e. class 4220 Construction of utility projects, class 4290 Construction of other civil engineering projects, class 4322 Plumbing, heat and air-conditioning installation and class 4329 Other construction installation

4. Remuneration

In 2013, the employees working in construction establishments in the Whole Kingdom received the total remuneration 48,437.14 million baht or 144,330.84 baht per persons annually. The employees engaged in *other specialized construction activities* received the highest annual remuneration of 200,271.62 baht per persons. While the establishment engaged in *site preparation* the lowest annual remuneration of 78,328.79 baht per persons.

Figure 3 Remuneration of construction establishments in the Whole Kingdom by class of construction industry



5. Value of gross output, intermediate consumption and value added

The value of gross output or receipts of construction establishments were totally 445,277.41 million baht. The intermediate consumption and value added were totally 299,237.30 million baht and 145,990.11 million baht respectively. Comparing the value added to value of gross output or receive was 32.8 percent.

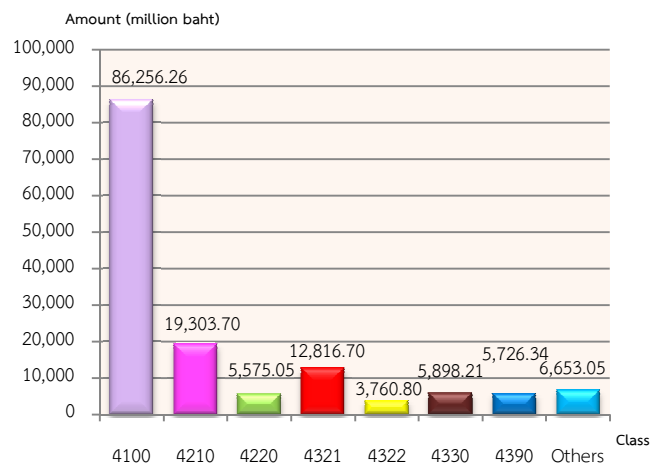
For the average value of gross output had 13.47 million baht per establishment and 1.20 million baht per persons.

In terms of the value added, they were 4.42 million baht per establishment and the value added 392,400 baht per persons.

Considering by class of construction industry, it was found that most of value added were from *construction of buildings*, (86,256.26 million baht or 59.1 percent). The following were from *construction of roads and railways and electrical installation*

(19,303.70 million baht or 13.2 percent and 12,816.70 million baht or 8.8 percent respectively). The other class of construction industry had rather low proportion less than 5.0 percent.

Figure 4 Value added of construction establishments in the Whole Kingdom by class of construction industry



Value added = value of gross output or receives – intermediate consumption

Value of gross output or receives refer to receipts of establishments in 2013

Intermediate consumption refer to expenditure of construction establishments in 2013

Class of construction industry:

- Class 4100 Construction of buildings
- Class 4210 Construction of roads and railways
- Class 4220 Construction of utility projects
- Class 4321 Electrical installation
- Class 4322 Plumbing, heat and air-conditioning installation
- Class 4330 Building completion and finishing
- Class 4390 Other specialized construction activities
- Other class i.e., class 4290 Construction of other civil engineering projects, class 4311 Demolition, class 4312 Site preparation and class 4390 Other specialized construction activities