

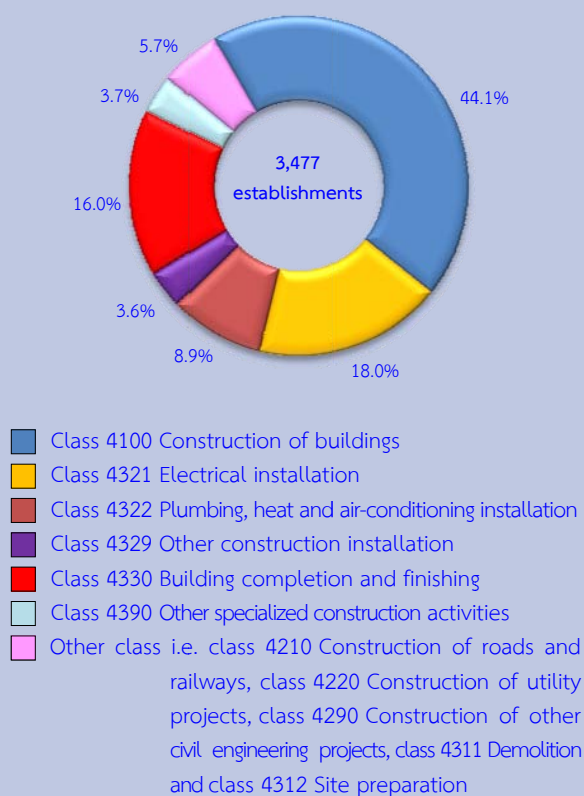
## Executive summary

The National Statistical Office (NSO) carried out the 2014 Construction Industry Survey, which is the 4<sup>th</sup> survey and the NSO planned for conducting this survey every 5 years. The main objective of the survey is to collect basic information data on construction establishments. Data is vital to economic development planning of the country and to private employment planning as well, the survey covered all construction establishments in the Whole Kingdom, which engaged in construction of buildings, civil engineering and specialized construction activities (Section F of The Thailand Standard Industrial Classifications: TSIC 2009). The field work was conducted during June 1 to September 30, 2014. The samples were from 1,412 establishments from totally 3,477 establishments. The data presented in this report was the operation of the construction establishments located in **Bangkok** during January 1 to December 31, 2013. The major findings are as follows:

### 1. Number of establishment

The results of the 2014 Construction Industry Survey of 3,477 establishments in Bangkok, it was found that most of them (44.1 percent) were engaged in *construction of buildings*. Followed by those engaged in *electrical installation, building completion and finishing* and *plumbing, heat and air-conditioning installation* were 18.0, 16.0 and 8.9 percent respectively. The other class of construction industry not mentioned above had rather low proportion each had less than 4.0 percent of the total.

Figure 1 Percentage of construction establishments by class of construction industry



### 2. Size of establishment

Most of them were 40.0 percent with 1 - 5 persons engaged. The establishment with more than 20 persons engaged and 6 - 10 persons engaged were 21.8 and 21.2 percent respectively. While the establishment with 16 - 20 persons engaged was 6.0 percent.

Considering by class of construction industry, it was found that most the establishment (more than 40.0 percent) was with 1 - 5 persons engaged. Except for those engaged in *construction of buildings, construction of roads and railways, construction of utility projects, construction of other civil engineering projects, electrical installation* and *other specialized construction activities*.

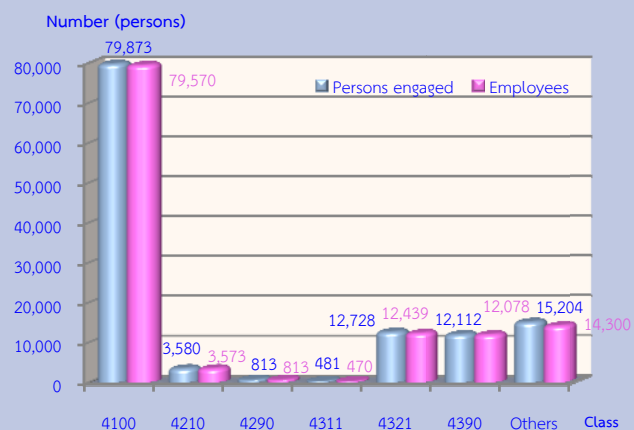
**Table 1 Percentage of construction establishments by size of establishment and class of construction industry**

Size of establishment/ Class of construction industry	(unit : persons)					
	Total	1 – 5	6 – 10	11 – 15	16 – 20	> 20
<b>Total</b>	<b>100.0</b>	<b>40.0</b>	<b>21.2</b>	<b>11.0</b>	<b>6.0</b>	<b>21.8</b>
4100 Construction of buildings	100.0	35.2	22.0	13.2	5.8	23.8
4210 Construction of roads and railways	100.0	13.1	18.4	13.1	-	55.4
4220 Construction of utility projects	100.0	16.9	20.8	9.1	11.7	41.5
4290 Construction of other civil engineering projects	100.0	33.3	11.1	5.6	5.6	44.4
4311 Demolition	100.0	41.2	11.8	17.6	5.9	23.5
4312 Site preparation	100.0	46.9	28.6	10.2	6.1	8.2
4321 Electrical installation	100.0	35.9	23.9	9.9	8.1	22.2
4322 Plumbing, heat and air-conditioning installation	100.0	46.6	19.4	8.4	7.5	18.1
4329 Other construction installation	100.0	58.5	9.8	11.4	8.9	11.4
4330 Building completion and finishing	100.0	57.8	21.5	8.4	2.2	10.1
4390 Other specialized construction activities	100.0	27.5	12.6	7.1	7.9	44.9

### 3. Number of persons engaged and employees

In 2013, the workers of the construction establishments in totally to 124,791 persons. In term of employments, the number of employees totally to 123,241 persons. Considering by class of construction industry, it was found that most of them worked in *construction of buildings*, of 79,570 persons or 64.5 percent. Followed by those worked in *electrical installation* 12,439 persons or 10.1 percent. The rest engaged in class of construction industry not mentioned above.

**Figure 2 Number of persons engaged construction establishments by class of construction industry**



**Note:** Persons engaged refer to owners or juristic partnerships, unpaid workers and employees

#### Class of construction industry:

- Class 4100 Construction of buildings
- Class 4210 Construction of roads and railways
- Class 4290 Construction of other civil engineering projects
- Class 4311 Demolition
- Class 4321 Electrical installation
- Class 4390 Other specialized construction activities
- Other class i.e. class 4220 Construction of utility projects, class 4312 Site preparation, class 4322 Plumbing, heat and air-conditioning installation, class 4329 Other construction installation and class 4330 Building completion and finishing

### 4. Remuneration

In 2013, the employees working in construction establishments in Bangkok received the total remuneration 25,100.01 million baht or 203,666.08 baht per persons annually. The employees engaged in *construction of other civil engineering projects* received the highest annual remuneration of 247,963.79 baht per persons. While the establishment engaged in *demolition* the lowest annual remuneration of 155,942.83 baht per persons.

Figure 3 Remuneration of construction establishments by class of construction industry

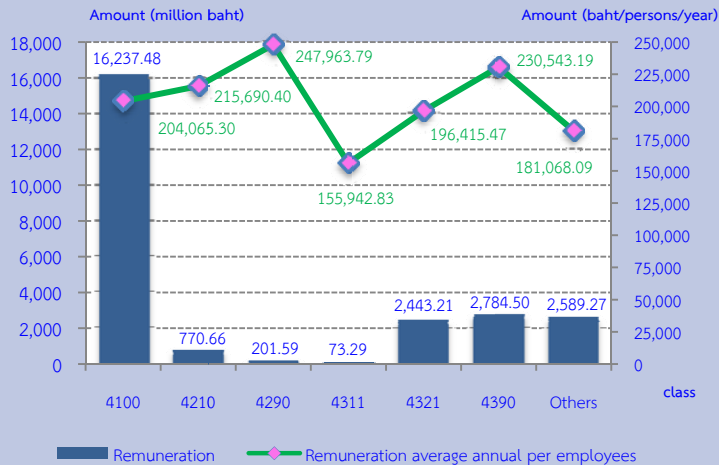
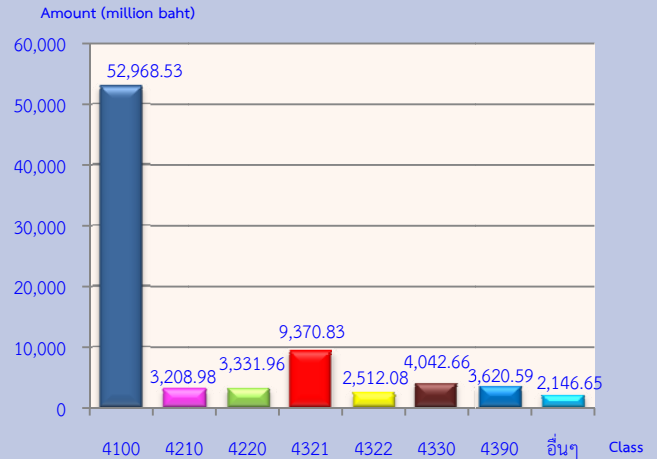


Figure 4 Value added of construction establishments by class of construction industry



### 5. Value of gross output, intermediate consumption and value added

The value of gross output or receipts of construction establishments were totally 249,721.28 million baht. The intermediate consumption and value added were totally 168,519.01 million baht and 81,202.27 million baht respectively. Comparing the value added to value of gross output or receive was 32.5 percent.

For the average value of gross output had 71.82 million baht per establishment and 2.00 million baht per persons.

In terms of the value added, they were 23.35 million baht per establishment and the value added 650,700 baht per persons.

Considering by class of construction industry, it was found that most of value added were from *construction of buildings*, (52,968.53 million baht or 65.2 percent). The following were from *electrical installation* (9,370.83 million baht or 11.5 percent). The other class of construction industry had rather low proportion less than 6.0 percent.

Value added = value of gross output or receives – intermediate consumption

Value of gross output or receives refer to receipts of establishments in 2013

Intermediate consumption refer to expenditure of construction establishments in 2013

#### Class of construction industry:

- Class 4100 Construction of buildings
- Class 4210 Construction of roads and railways
- Class 4220 Construction of utility projects
- Class 4321 Electrical installation
- Class 4322 Plumbing, heat and air-conditioning installation
- Class 4330 Building completion and finishing
- Class 4390 Other specialized construction activities
- Other class i.e., class 4290 Construction of other civil engineering projects, class 4311 Demolition, class 4312 Site preparation and class 4329 Other construction installation